



# THIS WEEK AT SOUTH DADE SHS

2025-2026  
FEBRUARY



Monday 2/2/26	Tuesday 2/3/26	Wednesday 2/4/26	Thursday 2/5/26	Friday 2/6/26
TODAY is <b>A</b> day = PERIOD 1,3,5	TODAY is <b>B</b> day = PERIOD 2,4,6	TODAY is <b>A</b> day = PERIOD 3,5,7	TODAY is <b>B</b> day = PERIOD 4,6,8	TODAY is <b>A</b> day = PERIOD 5,7,1
MID YEAR ASSESSMENTS	MID YEAR ASSESSMENTS	Wrestling Booster ICE CREAM SANDWICH SALE \$2 WRESTLING DURING LUNCH CASH ONLY Ice Cream Sale 1st & 2nd LUNCH	MID YEAR ASSESSMENTS	MID YEAR ASSESSMENTS
7:30 AM ASVAB TEST MEDIA CENTER	<b>STEAM</b> SCIENCE TECHNOLOGY ENGINEERING ART MATH DISTRICT STEAM VISIT	SENIOR PANORAMIC	<b>CONGRATS!</b> PRINCIPAL AND SUPERIOR HONOR ROLL & PERFECT ATTENDANCE CELEBRATIONS BOTH LUNCHES	9:00 AM FBLA MTG. IN TREASURE COVE
2:30 PM INTERCLUB COUNCIL MTG AUDITORIUM	Chick-fil-& TUESDAYS	PHOTO	1:00 (H) VS. SOUTHWEST	Boys ALL DAY GMAC WRESTLING CHAMPIONSHIP
	2:00 (H) VS. FERGUSON	Girls basketball GAME 7:30 (H) PAL/CR DISTRICT SEMIFINALS	Boys ALL DAY GMAC WRESTLING CHAMPIONSHIP	Saturday 2/7/26
	VARSITY basketball GAME 7:30 (H) VS. SOUTHWEST DISTRICT QUARTERFINALS			Girls basketball GAME 7:30 (H) DISTRICT FINALS

## ACTIVITIES

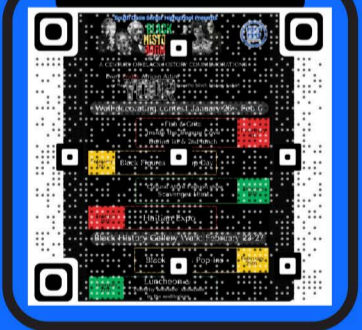


Clubs at South Dade Meeting Dates & Times



### BLACK HISTORY MONTH QR CODE

SCAN ME



SCAN FOR ACTIVITIES

## ATTENDANCE

1. If you're absent make sure to turn in your excused note when you return to school.

2. Email attendance concerns to: [7701attendance@dadeschools.net](mailto:7701attendance@dadeschools.net)

\*If your grades have been withheld, see Mr. Cenat.

### ATTENDANCE MATTERS!

## ATHLETICS

# CONGRATULATIONS

to our girls wrestling for winning GMAC



## STUDENT SERVICES

DID YOU KNOW THAT A BIG PART OF A COUNSELOR'S JOB IS TO HELP YOU SET GOALS, STAY MOTIVATED, AND FIND STRATEGIES THAT WORK FOR YOU? WHETHER IT'S ACADEMICS, FRIENDSHIPS, OR PLANNING FOR YOUR FUTURE, COUNSELORS ARE HERE TO SUPPORT YOU EVERY STEP OF THE WAY.

IF YOU EVER NEED HELP OR JUST WANT TO TALK, COME SEE YOUR COUNSELOR DURING LUNCH OR SEND THEM A MESSAGE!